



Sri Ram Rubber Products

*Manufacturing of Rubber compounding , Rubber moulded parts ,
Rubber extrusion hose , Braiding & Knitting hose , Sponge extrusion & Plastic
moulded parts.*

(An IATF 16949 : 2016, SQ Mark (HMI & KIA) Certified Company)

Website: www.sriramrubber.com





Management Service

CERTIFICATE

The Certification Body
of TÜV SÜD Management Service GmbH
certifies that

Sriram Rubber Products
S.No.124&2, Plot no.511, Sri Ganapathy colony,
Panankottor Village, Appur Road, Maraimalai Nagar
Chengalpet District - 603209
India

has established and applies
a Quality Management System for

Manufacture of
Rubber Compounding, Rubber moulded parts,
Rubber extrusion hoses, Sponge Extrusion
and Plastic Moulded Parts
(Without Product Design as per Chapter 8.3).

An audit was performed and has provided proof
that the requirements according to

IATF 16949
First Edition 2016-10-01

are fulfilled.

Issue date: 2021-07-02

Expiry date: 2024-07-01

Certificate Registration No.: 12 111 62235 TMS

IATF Certificate No.: 0408456

Head of Certification Body
Munich, 2021-07-02

Page 1 of 1



CERTIFICATE OF SUPPLIER QUALITY

SQ 인증서

Vendor Name : Sri Ram Rubber Products
Business Type : Rubber
Certification Number : HMI/SQ/316-15
Location : Chennai



Certification Awarded In Pursuant for
Fulfilling the Quality Assurance Compliance

Year 2014

- ◆ Tier 1 Vendor : Doowon Automotive
- ◆ Support By : Hyundai Motor India Ltd.

OUR CUSTOMERS

DOOWON

MATE

BK

TAFE 

 **YAZAKI**

hanon
SYSTEMS

 **BASF**
We create chemistry

ARaymond TM
MORE THAN FASTENING

 **ONEGENE**
The Best One


HWASEUNG


K · F · T · I
KOREA FUEL-TECH INDIA (P) LTD

 **DELFINGEN**

 **PYUNG HWA**
INDUSTRIAL CO., LTD.

FACILITIES



- RUBBER COMPOUNDING FACILITY AVAILABLE
- AUTOWEIGHING FACILITY FOR CHEMICAL WEIGHING AVAILABLE
- RUBBER MOULDING FACILITY AVAILABLE
- ONLINE EXTRUSION FACILITY AVAILABLE (EPDM HEAT INSULATION FOAM)
- PROFILE EXTRUSION HOSE FACILITY AVAILABLE
- BRAIDED EXTRUSION HOSE FACILITY AVAILABLE
- KNITTING EXTRUSION HOSE FACILITY AVAILABLE
- INJECTION MOULDING FACILITY AVAILABLE.

SRRP INFRASTRUCTURE

MIXING



TESTING LAB



ONLINE EXTRUSION



C/M WORK ZONE



EXTRUSION



BRAIDED ZONE



ONLINE EXTRUSION EPDM SPONGE PARTS



EPDM SPONGE PAD



EPDM SPONGE PAD



EPDM SPONGE PAD

RUBBER EXTRUDED PARTS

A long, thin, black rubber hose with a 90-degree bend at one end.

TANKHOSE



KYHOSE



BN71 RH HOSE



BN71 LH HOSE

DRAIN HOSE EXTRUDED PARTS

BRAIDED & KNITTING HOSE PARTS



**EPDM BRAIDED
HOSE**



**EPDM KNITTING
HOSE**



**EPDM BRAIDED
HOSE**

RUBBER MOLDED PARTS



ISOLATOR



COVER



ISOLATOR



INSULATOR



ISOLATOR UPPER



GROMMET



GROMMET-DA

RUBBER MOLDED PARTS



• FLASK STRAP



URBAN STRAP



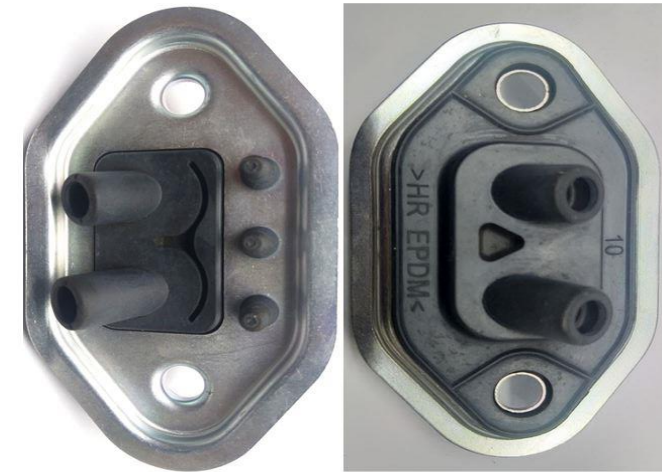
PACKING-ASSY



O - RING



GASKET



PACKING-ASSY

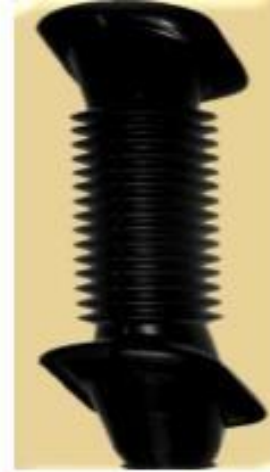
RUBBER MOLDED PARTS



GROMMET-AA



GROMMETFA



GROMMET



RUBBERSTOP



RUBBERLEAF



GROMMET



VPR



RADIATOR

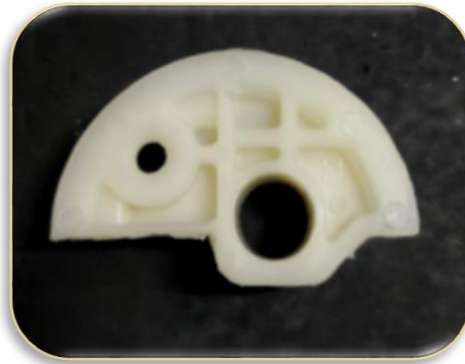


COOLBOXHOSE-LHD/RHD

INJECTION MOLDED PARTS



PLUG CAP



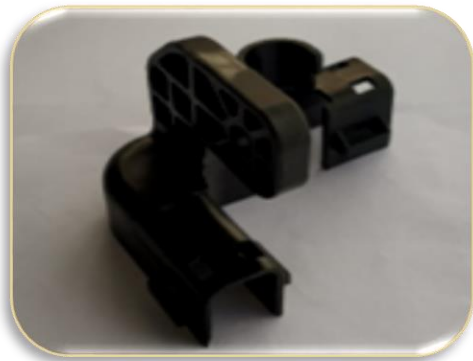
HOLDER



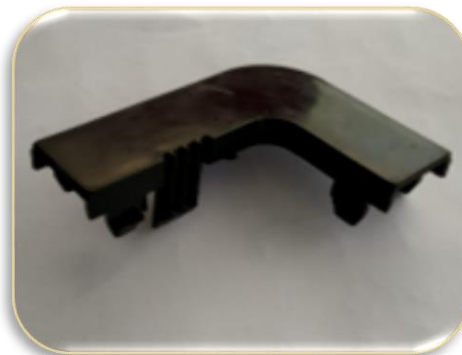
CLAMP-1



CLAMP-2



PROTECTOR-1



PROTECTOR-2

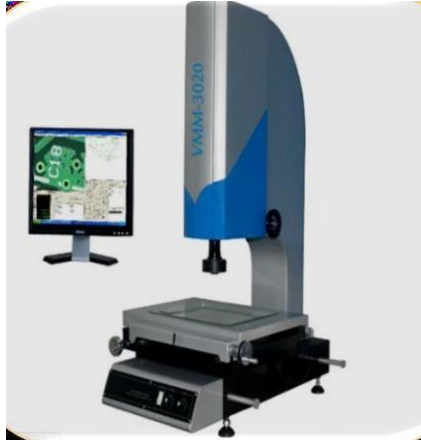


CAP-ASSY



CHARGE VALVE
CAP

TESTING EQUIPMENTS



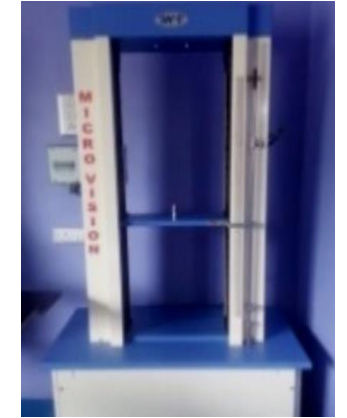
VIRTUAL MEASURING M/C



OVEN



SPECIFIC GRAVITY



UNIVERSAL TESTING M/C



MOONEY METER



RHEOMETER



MUFFLE FURNACE



MEI INDEX



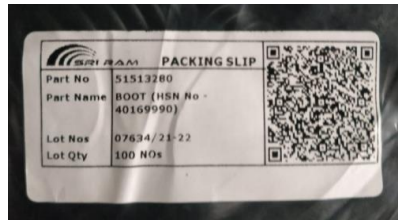
TRACEABILITY SYSTEM

Finished goods at Customer end

Production goods

FMB goods

CMB goods



TRACKING



WIP CARD		
M/S. Sri Ram Rubber Products		
Jobcard NO		
Part No	51513280	
Part Name	BOOT (HSN No - 40169990)	
Lot Qty	1010.00 nos	
Date	10/22/21 3:46 pm	OTHERS
Operator		
Exp Date:	04/23/22 12:00:00 AM	

TRACKING



WIP CARD		
M/S. Sri Ram Rubber Products		
Jobcard NO		
Part No	FMB EP40	
Part Name	FMB RUBBER COMPOUND	
Lot Qty	30.04 kg	
Date	10/20/21 11:34 am	OTHERS
Operator		
Exp Date:	10/27/21 12:22:39 PM	
CMB JobcardNo:	07176/21-22	

TRACKING



WIP CARD		
M/S. Sri Ram Rubber Products		
Jobcard NO		
Part No	CMB EP40	
Part Name	CMB RUBBER COMPOUND	
Lot Qty	29.47 kg	
Date	10/12/21 12:45 pm	OTHERS
Operator		
Exp Date:	10/12/22 2:00:16 PM	

TRACKING



BATCH CARD	
M/S. Sri Ram Rubber Products	
Batch #	
Material Name	P80
GR#	GR000051K
Date	21-Sep-2021
GR Qty	25
Exp.Date	20-Mar-2022
Quality Approved	<input type="checkbox"/> OK <input type="checkbox"/> Not OK
Signature	
DOCNO: JF R 04/REV 00/18.01.2013	

TRACKING



Raw material entry

BatchNo	MaterialName	Qty
06-21/142	C18	0.12
	Total	0.12
BatchNo	MaterialName	Qty
K21118C	N50	2.14
K21118C	N50	6.66
	Total	8.80
BatchNo	MaterialName	Qty
202105192080	P80	13.00
	Total	13.00
BatchNo	MaterialName	Qty
PL/09/PA-711	POL	7.10
	Total	7.10
BatchNo	MaterialName	Qty
72231	Z03	0.45
	Total	0.45

Job Tracking

Raw Material Ingredients

FUTURE PLAN

2023-2024

- Sriram Rubber Expansion unit at Anandpur.(5.8 Acre.)

2024-2025

- Manufacturing Plan for TPE & Plastic Extrusion process



Thank You!